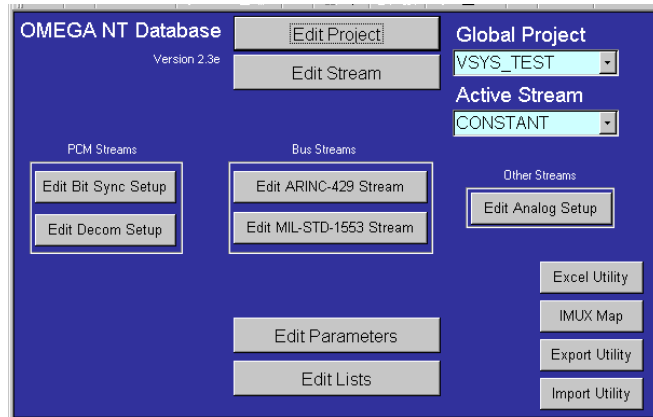


OMEGA: Database Definition

Features

- Microsoft Office Access
- Project file manager
- Import/Export utilities
- Automated management of project files by project name
- Ability to open multiple projects across a network



OMEGA's database utilizes Microsoft Office Access—a product that users find highly functional and versatile. All parameter processing attributes, derived parameter processing attributes, data distribution information, and hardware setup information is stored in Access database tables specifically designed and integrated to function as the OMEGA telemetry database.

Users have an easy time adjusting to OMEGA's intuitive menu system to define their own unique telemetry database. OMEGA also includes a project file manager, which automatically stores all relevant project files under a single directory or project name. This includes all of the Access database files, displays, and archived files that are residing in one selected project file structure. Users can also create and recall multiple projects for rapid system reconfiguration.

Functionality and Versatility. OMEGA designates the system server as the resident host for the project database, and clients have full edit and control capabilities simply by attaching to a project. Clients can also open local projects for editing. Even more advantageous in today's demanding environment is the system's ability to simultaneously open multiple projects across a network.

Import/Export Utilities Included. These utilities enable users to take advantage of other editors or existing databases for setup. OMEGA supports TMATS and Series-30 ASCII formats and includes a standard utility for importing and exporting data between Microsoft Access and Excel spreadsheets. Users familiar with the many tools offered by Excel can make maximum use of this feature when performing analyses and when manipulating the database.

Front-end Not Required. OMEGA is a truly distributed processing system. Since the processing engine does not require front-end hardware, data can be piped into OMEGA over a network via reflective memory or sent directly from either a disk or tape. Operation of the display, archive, analysis, and database definition software remains the same as if a front end were the data source.

Import/Export Formats:

- Access
- ASCII
- Direct Copy
- Excel
- TMATS

C++ Compiler:

- Required for loading front-end hardware

Set-up Definition Options:

- GUI to define processing definitions
- Menus for hardware setup, stream definition, and processing and distribution attributes
- Access database editor
- Imported ASCII file

File Manager:

- Automated management of project files by project name