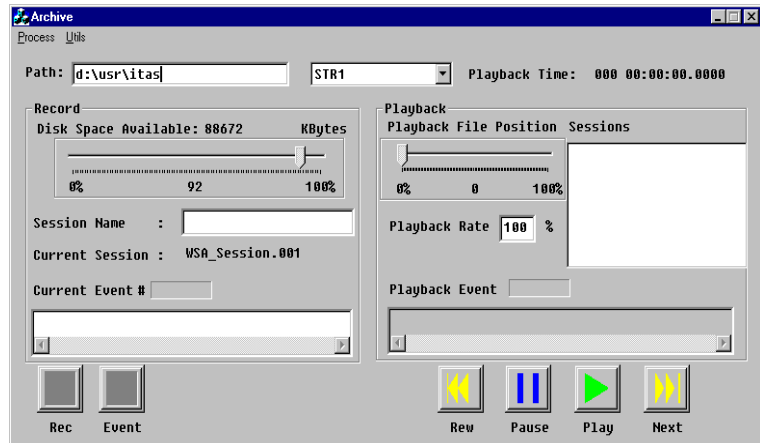


OMEGA: Data Archival

Features

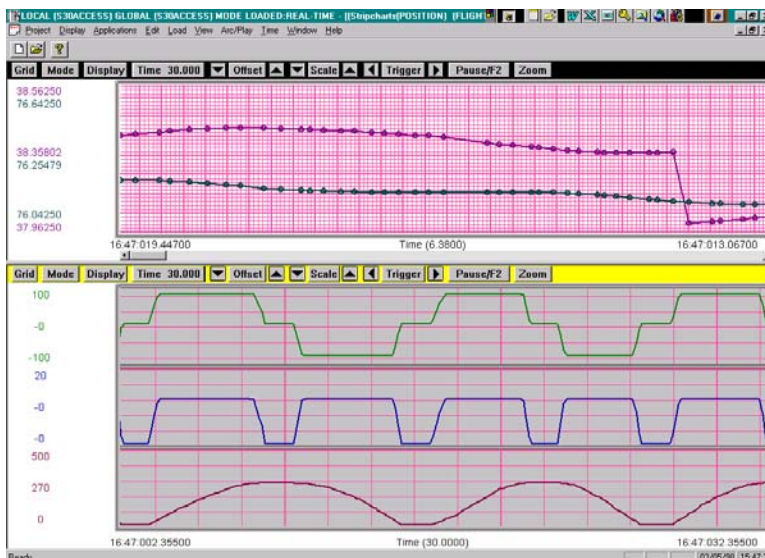
- Utilities to copy and transfer archive files
- Tagless raw data format
- Ability to analyze data from a standard desktop running OMEGA
- Remote NFS archive destinations

OMEGA's data archival function offers the utmost in flexibility for meeting the expanding requirement for archived data. It includes a complete real-time data archival and data playback analysis environment. Users can store data to disk in either raw tagless or tag/data format. OMEGA includes several utilities to copy and transfer archive files, to access and display data, and to parse and reformat the data for detailed analysis.



Analyzing the Archived Data. The standard disk format is a tagless raw data format, which takes advantage of higher throughput rates than does the tag/data format; i.e., higher overhead produces lower bandwidths. The tagless format also makes optimal use of OMEGA's powerful Engineering Units Processor (EUP). During playback, the software runs the same EUP used for real-time processing. The EUP ingests data as it is recalled from the disk and performs all data processing as it is defined by the original database. Archived files can be analyzed on a standard desktop running OMEGA without the normally required telemetry hardware modules. The archival function supports remote NFS archive destinations, remote network locations, and local disks.

Every display created for real-time use can also be used during playback. OMEGA supports simultaneous real-time and playback acquisition, processing, and display.



Events

- Manual
- Auto including start/stop

100% Raw Data

- Tagless binary format
- Maximized data throughput
- Up to 30 Mbps PCM data
- Maximum rate: PCM format and PC configuration dependent
- Data reprocessed for display during playback, viewing, and export
- Local archiving supported on Client workstations

OMEGA: Data Archival

Selected Raw and EU Data

- Raw (tagless) data playback reprocessed for display
- Selected (or all) raw and EU data archive in tag/data format
- User-application delivered as required

Series-30 and Series-10 File Formats

- Tag/data archive format
- User-application delivered as required

Selectable Path

- Standard Feature
- Store to any device recognized by the operating system
- Remote network storage device support
- Removable media support
- Separate archive drive
- Move and copy file

OMEGA supports standard SCSI-compatible hardware including disks and RAID devices. As an added benefit, with an Intelligent Multiplexer (IMUX) front end, OMEGA also supports digital tape recording and playback.